

IF  
OPPORTUNITY  
DOESN'T  
KNOCK  
THEN  
BUILD  
A DOOR

**2019  
Annual  
Conference**  
October 4<sup>th</sup>–5<sup>th</sup> 2019

**Tinley Park Convention Center**

18451 Convention Center Dr.  
Tinley Park, IL 60477

[www.ilota.org](http://www.ilota.org)

**ILOTA**



## **Vision, Mission, Core Values**

### **Vision**

ILOTA is a multifaceted association committed to enhancing health and well-being through the utilization of best occupational therapy practices in Illinois.

### **Mission**

ILOTA is recognized as the premier occupational therapy resource in Illinois. We strive to advance the best practice of occupational therapy through serving, supporting and promoting the profession.

### **Core Values**

#### **Be Dynamic**

We are an ever evolving association that serves as a catalyst, promoting health and well-being by inspiring compassionate, enthusiastic occupational therapy practitioners. Through forward thinking we envision the need for change and innovation.

#### **Be Inclusive**

We represent practitioners within current and emerging practice areas across Illinois to ensure every voice is heard. We embrace diversity and acknowledge the need to support growth and development of all practitioners within the state.

#### **Be Dedicated**

We are dedicated to the advancement of occupational therapy and our stakeholders. We need self-motivated people who are passionate about the occupational therapy profession.

#### **Have Integrity**

We value ethical practice by our members which in turn drives the organizations adherence to ethical business practice. In light of our advocacy role, it is critical that our profession is viewed as trustworthy through modeling of our core values.

## Event Schedule

### Friday, October 4th

7:00 am - 7:45 am	Breakfast (included in registration)
7:00 am - 4:00 pm	Registration Open
7:45 am - 8:15 am	Welcome Address
8:15 am - 11:45 am	Concurrent Workshops, Short Courses, Research Platforms, & Roundtable Discussions
12:00 pm - 1:00 pm	Leadership Development Program Introduction and Lunch
1:00 pm - 2:30 pm	Keynote Presentation with Dr. Mark S. Benn—"What's In YOUR File? From Prejudice to Understanding"
2:45 pm - 6:00 pm	Concurrent Workshops, Short Courses, Research Platforms, & Roundtable Discussions
2:45 pm - 4:15 pm	Poster Session
6:00 pm - 8:00 pm	Awards, Dinner, & Networking (featuring the Acoustiholics) & Student Event
	*Vendor Hall Open Until 6pm*

### Saturday, October 5th

7:00 am - 7:30 am	Breakfast (included in registration)
7:00 am - 3:00 pm	Registration Open
7:30 am - 10:45 am	Concurrent Workshops, Short Courses, Research Platforms, & Roundtable Discussions
11:00 am - 12:30 pm	Business Meeting & Lunch
12:45 pm - 4:00 pm	Concurrent Workshops, Short Courses, Research Platforms, & Roundtable Discussions

\*Vendor Hall Open Until 4pm\*

**Friday Evening Student Event**

**6:00 pm - 8:00 pm**

**Tinley Park Convention Center**

**Pre-registration required with conference registration.**

**\$5 per person**

**Appetizers Provided, Cash Bar**



## **2019 Keynote Address**

### **“What’s In YOUR File? From Prejudice to Understanding”**

**Dr. Mark S. Benn**

**Friday, October 4, 2019 at 1:00pm**

Mark Benn is originally from Philadelphia, Pennsylvania, however, he has made Colorado his home for 37 of the past 43 years – with a six year stop in Columbus Ohio. He is the father of seven children (five of whom are adults).

Dr. Benn received his doctorate in counseling psychology from the University of Northern Colorado in 1986 and has always been fascinated by people. He has spoken extensively educating and entertaining audiences about understanding and reducing prejudice. Besides being a good parent, it’s all he ever wanted to do. His hope is that he has found a way to combine the talents of a university professor and storyteller to deliver difficult messages about prejudice, cross-cultural communication, gender roles, workplace mediation and personal struggle.

Dr. Benn recently retired after 25 years as a psychologist at Colorado State University and currently has a private practice in Fort Collins, Colorado and works as a consultant and educational/motivational speaker for organizations throughout the United States.

### Conference Registration Dates

Through September 8th	→	Early Registration is open (on-line)
September 9th through September 22nd	→	Regular Registration (on-line)
September 23rd through October 3rd	→	Late Registration (on-line)
October 4th through October 5th	→	On-site Registration Available

### Conference Hotel Information

The Holiday Inn Tinley Park  
18501 Convention Center Dr, Tinley Park, IL 60477  
Room Block - \$139 per night available through September 12, 2019  
on a limited basis.

To make a reservation call 1-708-444-1100, mention that you are  
with the Illinois Occupational Therapy Association Conference.

Register on-line at [www.ilota.org](http://www.ilota.org)

Attendees will have the option to join  
(at a 10% discount) or renew membership  
with registration via the on-line  
form.

### Important Notes About the ILOTA 2019 Conference

- **SIS Roundtables** have been replaced with SIS Sessions scheduled concurrently with short courses and workshops and will still be facilitated in roundtable format. A full schedule of the SIS sessions will be posted on-line and at conference. Every effort has been made to avoid an overlap in topic area with the concurrent short courses and workshops. See schedule pages 19-20.
- **Research Sessions:** Each Research Platform consists of multiple presentations on similar or related topics that address current research or demonstrate application of research, followed by a Q&A session that will allow attendees to ask specific questions to either Speaker(s) regarding their research or practice. These are held in the same room and all presentations take place within the timeframe. Attendees must be present for all to receive CEUs.
- **CEU's** are earned based on validated session attendance. CEU's are as follows:
  - ◇ Concurrent short course—1.5 CEUs
  - ◇ Concurrent workshops—3.0 CEUs
  - ◇ Poster presentations—up to 1.5 CEUs
  - ◇ Keynote —1.5 CEUs
  - ◇ Research sessions—1.5 CEUs
  - ◇ Total CEU's available over the full two days of conference is 16.5.
- **Speakers** are not required to have handouts available for attendees. A selection of presenters will make their presentations available electronically and this information will be provided at on-site registration. It is the speaker's option to provide handouts or not.
- **Sessions with preregistration** limits will be seated as follows: Preregistered attendees will be allowed to enter the session first. If there is space remaining due to no-shows, non-preregistered attendees will be seated. Open seating starts 5 minutes after the scheduled start of a session.
- **Event schedule** is subject to change without notice.

## Friday, October 4th

7:00am - 7:45am Registration and Check-in

7:00am - 7:45am Breakfast

Join us for a light breakfast and coffee in the ballroom. Included with registration.

7:45am - 8:15am Welcome Address—Jim Hill, ILOTA President (0.5 CEU)

8:30am - 10:00am Short Course & Research Platforms (1.5 CEUs)

**Special note about Research Platforms:** Each Research Platform consists of multiple presentations on similar or related topics that address current research or demonstrate application of research, followed by a Q&A session that will allow attendees to ask specific questions to either Speaker(s) regarding their research or practice. These are held in the same room and all presentations take place within the timeframe. Attendees must be present for all to receive CEU's.

**F1 - Client-Centered Goal Writing in a Pediatric Rehabilitation Setting (RP)**

**Content Area(s):** Pediatrics, General

**Speaker(s):** Rachel M. Vaughn MOT, OTR/L

**Course Description:** This pilot study utilized a well established tool to assist with goal-writing for school-aged children. The tool assists with establishing a leisure activity participation baseline for patients since their injury. Following completion of the assessment, patients and their occupational therapist identified a client-centered goal to address during therapy. Goals written for the treatment group were then compared to patient goals from the previous fiscal year (without use of the occupation-based tool) via retrospective chart review.

**F2 - The Effect of Hippotherapy on Sensory Processing among Children with Autism Spectrum Disorder: A Pilot Study (RP)**

**Content Area(s):** Pediatrics, Developmental Disabilities

**Speaker(s):** Glen S Cotton OTD, OTR/L, HPCS,

**Course Description:** The prevalence of autism spectrum disorder (ASD) among children is quite high. Hippotherapy is considered a viable alternative approach to treating children with ASD. Until now, no research study has specifically examined the therapeutic benefits of hippotherapy on sensory processing among this group. This presentation will report on a multiple-case study that examined the effect of an eight-session hippotherapy intervention on sensory processing among five children with a diagnosis of ASD. Results of the study showed that occupational therapy incorporating hippotherapy can improve sensory integration among children with ASD. Analysis of data showed improvements in the T-scores of the Sensory Processing Measure Home Form. Parents observed multiple improvements in sensory modulation.

**F3 – Self-Regulation in the Early Childhood Classroom (RP)**

**Content Area(s):** Pediatrics, Early Schools

**Speaker(s):** Caren M Schranz DROT, MS, OTR/L, Erin Simpson DrOT, MOT, OTR/L, James Chamales OTS, Hali Gertz OTS, Jessica Kruszecki OTS

**Course Description:** The purpose of this research study will be to develop an on-line educational program for general education early childhood teachers, to support self-regulation of the students so that they are successful in learning.

**F4 - The OT Practice Framework: Where We are Headed (SC)**

**Content Area(s):** General, Academics/Fieldwork

**Speaker(s):** Susan M Cahill PHD, OTR/L, FAOTA

**Course Description:** The Occupational Therapy Practice Framework (OTPF) articulates the profession's distinct domain of concern and outlines a process that explains how occupational therapy service delivery occurs within this domain. This document has been instrumental in guiding the profession and advocating for the role of OT with various populations and across practice settings. The AOTA Commission on Practice (COP) has been working for the past year to update and revise this critical document. Attendees of this session will learn about the process the COP used to solicit and incorporate feedback from AOTA members and learn about important updates and revisions to this critical document.

## Friday, October 4th

8:30am - 11:30am 3 Hour Workshop (3.0 CEUs)

**F5 - Roadmap to clinical research—begin your research adventure!****Content Area(s):** General, Administration**Speaker(s):** Karen M Keptner Phd, OTR/L,

**Course Description:** Research that demonstrates the distinct value of occupational therapy across multiple settings is necessary. During this interactive session, participants will refine a clinical question and create a road map for completion of a clinical research project, including identification of available resources. There will be lecture, individual and small group activities, along with large group discussions to help each clinician know how to initiate the process and get help when they need it.

**F6 - Tapping Into The Entrepreneur Within You: The Secret To Combining Occupational Therapy And Entrepreneurship To Change The World!****Content Area(s):** General, Community Practice**Speaker(s):** Brandon Seigel CRP

**Course Description:** Entrepreneurs often see the world from a very different perspective, one that is very analytic as well as ambitious. Occupational Therapy Practitioners often see the world from an extraordinary perspective regarding empowering greater function for humanity! The big question is, What would the world look like through a combined lens of "Occupational Therapy" & "Entrepreneurship"? This three-hour workshop is designed to empower Occupational Therapists to explore their entrepreneurial spirit!

**F7 - Post-Acute Care Reform (PAC): React to These Changes as a Door and Not A Wall****Content Area(s):** Administration, Geriatrics**Speaker(s):** Nancy Richman OTR/L, FAOTA

**Course Description:** The new payment model Patient Driven Payment Model (PDPM) for Skilled Nursing Facilities implementation date is October 1, 2019. Within a few months of this conference, on January 1, 2020, Payment Driven Groupings Model (PDGM) will also be implemented in Home Health. These reforms in payment systems and the initiatives to value-based care will challenge occupational therapists to promote and provide the distinct value of occupational therapy. This session covers the evolution of PAC payment reform, occupational therapy's role in implementing and influencing changing policy. We need to view these changes as an opportunity to provide quality care within an ethical framework.

10:15am - 11:45am Short Courses &amp; Research Platforms (1.5 CEUs)

**F9 - Exploring Post-Stroke Hand Edema and Interventions (SC)****Content Area(s):** Adult Physical Disabilities**Speaker(s):** Maria Nikiforos Jaramillo MS, OTR/L, CLT-LANA, Aimee Mattes OTR/L, CLT-LANA, Angela Collins MS, OTR/L

**Course Description:** The OT practitioner in the inpatient or outpatient setting should be equipped with skills to successfully manage hand edema post-stroke based on current research. Managing edema in the affected hand can improve outcomes such as decreased risk of contractures and/or improved participation in ADLs. Current research on treatment strategies to treat post-stroke edema will be presented. Participants will be briefly exposed to various treatment techniques via live demonstration and/or case study presentations.

**F10 - Overcoming Barriers to Forge Leadership Pathways for School-Based (SC) Practitioners****Content Area(s):** Schools**Speaker(s):** Moira P Bushell OTD, MEd, OTR/L, Carol Michels Ed.D, MS, OTR/L

**Course Description:** School based occupational therapy practitioners are educated to provide a broad variety of services for students within the school setting. However, due to requirements in the state of Illinois, occupational therapy practitioners are not eligible for ISBE credentialing, which prevents them from pursuing formal leadership roles within the school setting. This session will focus on ways occupational therapy practitioners can become leaders in their current roles and ways to advocate for increased opportunities in the future.

**F11 - Occupational Therapy's Role in Driver Rehabilitation (SC)****Content Area(s):** General, Adult Physical Disabilities**Speaker(s):** Kristie L Trenkle OTR/L, CLT, Rachel Dratnol OTR/L, CLT

**Course Description:** This Course is to educate attendees on the role occupational therapy plays in the driving rehabilitation process, the need for driving rehab programs, and the importance of providing these services to our clients.

**F12 - Portraits of Joy: Unlocking the lived experience of young adults with autism Expressed through PhotoVoice (RP)****Content Area(s):** Developmental Disabilities**Speaker(s):** Paula J Costello OTD, OTR/L, Hannah Dau OTS, Mallory Schrier OTS, Eleanor Sweeney OTS, Mackenzie Traub OTS

**Course Description:** The outcomes for young adults and adults with autism have been poor related to independence, social relationships, employment status, and living arrangements. This session will share research using Photovoice to explore the lived experience of young adults with autism in a community-based independent living residence. Challenges and opportunities for independence as seen through photos and reflections on the OT role will be shared.

**F13 - TeleSCOPE A telehealth intervention to promote adaptive behavior for Children with autism (RP)****Content Area(s):** Technology, Pediatrics**Speaker(s):** Samantha Souza OTD Student

**Course Description:** The overall purpose of this session is to educate practitioners about the importance of promoting adaptive behaviors for young children with autism spectrum disorders (ASD). Additionally, we present material about how coaching is an effective method to address adaptive behavior as well as information about coaching via telehealth.

## Friday, October 4th

### 10:15am - 11:45am Short Courses & Research Platforms (1.5 CEUs) - Continued

#### F14 - Defining the Distinct Value of OT with Patients after Cardiac Surgery (RP) Content Area(s): Adult Physical Disabilities, General

**Speaker(s):** Katie A Coakley OTR/L, Laurel McMIndes OTR/L, Christine Miller OTR/L, Emma Penn OTR/L

**Course Description:** After undergoing cardiac surgery, patients are faced with a myriad of occupational performance challenges, which occupational therapy can be invaluable in addressing. Despite this, the role of OT in working with patients after cardiac surgery remains somewhat unclear and the research concerning occupational therapy specifically with patients after cardiac surgery is limited. A group of occupational therapists at Loyola University Medical Center have reviewed the literature and put together a project to define the distinct value of occupational therapy with this population. During this session, presenters will discuss performance challenges faced by patients after cardiac surgery, the current evidence supporting our role and effectiveness, and the program developed at this medical center to more clearly define the role of occupational therapy and more effectively meet the occupational needs of patients after cardiac surgery.

### 12:00pm - 1:00pm Leadership Development Program Introduction & Lunch (1.0 CEU)

### 1:00pm - 2:30pm Keynote Address (1.5 CEUs)

Keynote Address with **Dr. Mark S. Benn, Psy.D** ([www.markbenn.com](http://www.markbenn.com))

### 2:45pm - 4:15pm Short Courses (1.5 CEUs)

#### F16 - From Innovation to Transformation: The Role of Telehealth In Today's Private Practice Content Area(s): Technology, General

**Speaker(s):** Brandon Seigel CRP

**Course Description:** Patient engagement is an essential process in empowering and optimizing clinical outcomes. In today's environment, clinicians are tasked with the challenges of engaging and empowering their patients with effective home-programs, quality care and engaging caregivers in a variety of ways. Technology is a tool; however, it also has the potential of being a barrier. In this workshop, attendees will learn ways to utilize technology to increase patient engagement without creating technology care-delivery barriers and increasing revenue into a private practice.

#### F17 - Visual skills that affect development, learning, attention. Content Area(s): Pediatrics, Schools

**Speaker(s):** Neil Margolis Doctor of Optometry

**Course Description:** The purpose of this presentation is to describe the visual skills and visual spatial concepts necessary for achieving developmental milestones and for successful learning in the classroom. The signs and symptoms of visual skill deficiencies as well as suggestions for compensation and visual skill development will be shared.

#### F18 - Implementing 3D Printing in Occupational Therapy: Promoting Accessible Occupational Engagement Content Area(s): Technology, Adult Physical Disabilities

**Speaker(s):** Abigail Jacob MSOT, OTR/L, Kathy Hooyenga OTR/L, MA RET, ATP

**Course Description:** 3D printing is an emerging tool within Occupational Therapy for customizing and fabricating low-cost adaptive equipment and assistive technology (AT) devices. This educational session aims to provide OTs an opportunity to learn and access tools and resources for delivering 3D printing in their clinical practice. The basics of 3D printing, case examples highlighting 3D printing in AT, and use of online and community resources for 3D printing without needing to own a 3D printer will be covered.

#### F19 - Talk is Cheap: Let's Stop Talking About Occupation, and Start Doing It! Content Area(s): General

**Speaker(s):** Rachel K Dargatz OTD, OTR/L,

**Course Description:** Occupational therapy got its name from its roots in occupation. Why, then, in the second century of the profession are we still seeming to struggle to keep our interventions focused in occupation? This course will briefly outline the history of OT practice, the influence of the health care system, and current practice trends, including facilitators and barriers to achieving OT practice that is rooted in occupation. It's time we stop preaching to the choir and start practicing the way we preach!



## Friday, October 4th

### 3:00pm - 6:00pm 3 Hour Workshop (3.0 CEUs)

#### F21 - You've Graduated! What Are You Going to Do Next?

**Content Area(s):** General, Academics/Fieldwork

**Speaker(s):** Rachel K Dargatz OTD, OTR/L, Abi Swidergal BS, COTA/L, CKTP

**Course Description:** Graduation -- check! NBCOT -- check! What's the next step? Finding the right job and transitioning from student to practitioner! Learn what makes for a good job "fit", what benefits and opportunities may be available to you, and how to maximize your teamwork and contributions. Successful transition also involves staying connected to the larger OT network. Find ways that you can be involved at the local, state, and national levels as well as within your practice setting to continue best practice for your clients and maintain your passion for occupational therapy!

#### F22 - A Role for Occupational Therapy on School Mental Health Teams

**Content Area(s):** Schools, Mental Health

**Speaker(s):** Lisa Mahaffey PHD, OTR/L, FAOTA, Christine Rojas MOT, OTR/L, Phoebe Jerousek MS/OT, OTR/L

**Course Description:** This session will engage participants in a discussion around the tiered approach to mental health in schools, and will highlight how occupational therapy practitioners could both be a support to children and serve the local school and district in their efforts to address this growing challenge. Presenters met through participation in the Midwestern TOT Program.

### 4:30pm - 6:00pm Short Courses & Research Platforms (1.5 CEUs)

#### F24 - Head and Neck Cancer Rehabilitation: Occupational Therapy's Role (SC)

**Content Area(s):** Adult Physical Disabilities, General

**Speaker(s):** Adam Steuer MS, OTR/L, CLT, Megan Kral MS, OTR/L, CLT

**Course Description:** This presentation is designed to inform therapists about occupational therapy's role in treatment of head and neck cancer. Evidence-based evaluation and treatment methods will be discussed to address the needs of head and neck cancer survivors living with impairments that may affect occupational performance.

#### F25 - Developing A Successful Level 2 Fieldwork Experience In Non-Traditional/ Role/Community Based Practice Settings For the OTA Student: Promoting the Value of Occupational Therapy and Future Leaders In The Profession (SC)

**Content Area(s):** Academics/Fieldwork, Community Practice

**Speaker(s):** Josephine M Burriess OTR/L, Gayla Morales OTR/L, Jana McMahon MA, OTR/L

**Course Description:** This session will provide an overview of how to successfully develop a level 2 fieldwork experience in role emerging/ community based/ non- traditional practice settings for the OTA student. Fox College has successfully developed two level 2 fieldwork experiences at two community day programs that serve clients with developmental disabilities and mental illness. Logistics, curriculum design, focus upon occupation based care, case examples, challenges, as well as initial outcomes data will be presented. Implications for promoting the profession, creating OTA leaders in the field, and possibilities for intraprofessional fieldwork collaboration with other universities will also be discussed/presented.

#### F26 - Validation, an empathetic approach to care for individuals with Alzheimer's Disease and Related Dementias (SC)

**Content Area(s):** Geriatrics, Mental Health

**Speaker(s):** Rhonda Guzman OTR/L

**Course Description:** Occupational Therapists are increasingly seeing Alzheimer's Disease and related dementias as a diagnosis in practice and are often challenged with finding ways to connect with these patients' in order to have successful treatment sessions. This short-course will provide a general overview of Validation, a proven method used to connect with older-adults living with dementia. Participants will learn how to incorporate Validation techniques into their daily practice to build trust, communication and engagement.

#### F27 - Cognitive Orientation to Daily Occupational Performance Group in Adult Day Rehabilitation: A Feasibility Study (RP)

**Content Area(s):** Adult Physical Disabilities, General

**Speaker(s):** Sarah M Zera OTR,

**Course Description:** Despite participation in traditional rehabilitation many people affected by acquired brain injury (ABI) such as stroke and traumatic brain injury (TBI) do not return to their previous occupations. The Cognitive Orientation to daily Occupational Performance (CO-OP) approach has emerged as an effective approach to increase participation in clients affected by ABI (Dawson, 2017). This study created opportunities for clients with ABI to learn strategies to successfully participate in their chosen occupations by developing, implementing, and evaluating a CO-OP group in the day rehabilitation setting. This presentation will present this study's findings as well as explore the implementation process and adjustments made throughout the process. Barriers and bridges to occupation-based, client-centered practice will also be explored.

#### F28 - Effectiveness and Feasibility of a Work-Self-Efficacy Intervention for Transitionally Housed Young People (RP)

**Content Area(s):** Mental Health, Community Practice

**Speaker(s):** Emily K Simpson PhD, OTR/L, Monika Robinson DrOT, OTR/L

**Course Description:** This presentation will describe the findings from an embedded mixed-methods research study that evaluated the feasibility and effectiveness of a work-self-efficacy intervention for homeless young people. Lack of significant changes in quantitative data was partially explained by the qualitative findings that identified three categories: (1) outcomes of participation, (2) operational considerations, and (3) future areas for programming. Occupational therapy practitioners need to find creative ways to collaborate with community agencies that capitalize on young people's motivation. Future research should investigate the best methodologies for studying this population.

#### F29—Reconstruction of Occupational Identity for Women who have Experienced Domestic Violence (RP)

**Content Area(s):** Mental Health, Community Practice

**Speaker(s):** Sara Kopera BA, OTS-III, Megan Finn BA, OTS-III, Katherine Kantner BA, OTS-III

**Course Description:** This pilot study utilized a well-established tool to assist with goal-writing for school-aged children. The tool assists with establishing a leisure activity participation baseline for patients since their injury. Following completion of the assessment, patients and their occupational therapist identified a client-centered goal to address during therapy. Goals written for the treatment group were then compared to patient goals from the previous fiscal year (without use of the occupation-based tool) via retrospective chart review.

## Friday, October 4th

6:00pm - 8:00pm Awards, Dinner, Networking, & Student Event

Come help us honor and celebrate our 2019 ILOTA Award Winners!  
Dinner and Networking Event—Featuring live music by the Acoustiholics



## Saturday, October 5th

**7:00am - 7:30am Registration and Check-in**

**7:00am - 7:30am Breakfast**

Join us for a light breakfast and coffee in the ballroom. Included with registration.

**7:30am - 9:00am Short Courses & Research Platforms (1.5 CEUs)**

**S1 - Everything You Want to Know about Working in Academia (SC)**

**Content Area(s):** Academics/Fieldwork, General

**Speaker(s):** Debora A Davidson PhD, OTR/L

**Description:** Have you been wondering about moving your career path toward academia? Educating the next generations of OT practitioners can be extremely rewarding, exciting and challenging. There is a burgeoning need for educators in occupational therapy and occupational therapy assistant programs. OT and OTA educators can assume a variety of roles and tasks, depending on the type of school and their job title within their setting. Come to this session if you want to know an insider's view and to ask questions.

**S2 - Say It Like You Mean It: Promoting the Scope of Occupational Therapy in Early Intervention (SC)**

**Content Area(s):** Early Intervention, Pediatrics

**Speaker(s):** Evguenia Popova MS, OTR/L, Veronica LLerena OTR/L

**Description:** Occupational therapists often find themselves complacent to the conventional definition of their role as a fine motor and sensory expert in Early Intervention. One way that we can advocate for our full scope of practice is by shifting focus toward documenting the child's occupational profile. The purpose of this presentation is to guide participants in redefining what their documentation can look like to more fully communicate their scope as an occupational therapy practitioner.

**S3 - OT role in the continuum of care with LVAD patients (RP)**

**Content Area(s):** Adult Physical Disabilities, General

**Speaker(s):** Jaclyn Dusing OTR/L

**Description:** The purpose of this session is to review the overall importance of OT's role across the continuum of care for left ventricular assist device (LVAD) patients. We plan to educate and demonstrate initial evaluations, including pre-VAD workup, treatment interventions, OT's role in discharge planning, and the value of OT with early progressive mobility in the ICU and with this patient population. We also plan to highlight case studies that include medically complex patients and the use of specialty equipment. These patient populations include LVAD, intra-aortic balloon pumps (IABP), and temporary mechanical circulatory support device (MCS).

**7:45am - 10:45am 3 Hour Workshop ( 3.0 CEUs)**

**S5 - The Power of Technology for Independence in Learning**

**Content Area(s):** Schools, Technology

**Speaker(s):** Bridgette F Nicholson Occupational Therapist / Assistive Technology Consultant

**Description:** Assistive technology service provision is an exciting occupational therapy role! In this fast-moving, fun and hands-on session, participants will be exposed to some of the most effective technologies and strategies for enhancing independence in learning. Many of these tools are readily available, powerful and free or low-cost. After this hands-on session participants will have access to powerful tools and will be able to use these ideas with their students and patients immediately. (Participants should bring iOS or Android tablet with keyboard OR laptop and headphones with microphone for hands-on portion.)

**S6 - Breaking Down the Neurofunctional Approach: Clinical Application Strategies**

**Content Area(s):** Adult Physical Disabilities, Geriatrics

**Speaker(s):** Kelsey Watters OTR/L, Elizabeth Robinson OTD, OTR/L

**Description:** Patients with severe cognitive impairments frequently pose challenges for the rehabilitation team, specifically related to poor compliance with treatment, difficulty transferring skills, and limited generalization of new learning. This workshop will explore the Neurofunctional Approach (NFA), an intervention focusing on the development of routines, errorless learning, and direct skills training to maximize a person's participation in valued occupations. Through case studies, learners will have the chance to apply key principles of the NFA and develop an action plan for application in their own practice setting.

**S7 - Introduction to Kinesiotaping**

**Content Area(s):** General, Adult Physical Disabilities

**Presenter:** Clem Carder COTA/L, LMT, CKTI, Kathryn Eberhardt MaED, COTA/L, Janet Adcox OTR/L

**Description:** This course will introduce participants to the Kinesio Taping Method. In addition to lecture on Kinesio Taping and its unique properties and uses, attendees will participate in a lab session which will give them the opportunity to tape and be taped experiencing first hand the immediate effect Kinesio Taping can provide. Participants should wear clothing allowing access to the low back/neck/and shoulder.

**\*There is a limit of 50 registrants for this workshops.\***

Saturday, October 5th

9:15am - 10:45am Short Courses (1.5 CEUs)

**S8 - Occupational Therapy and Post-Secondary Transition Planning: A "Just Right" Fit** Content Area(s): Schools, Pediatrics

**Speaker(s):** Theresa M Carlson Carroll OTD, OTR/L

**Description:** The AOTA Transition Community of Practice developed a presentation to describe the role of Occupational Therapy in post-secondary transition. This presentation includes declarations and resources designed to increase the OT practitioners' role in transition, improve post-school outcomes for youth and young adults, and strengthen OT practitioners' skills to advocate for OT on transition teams, including school administrators and stakeholders. During this short course, participants will review the AOTA presentation and engage in conversation about the presentation and how it could be used within Illinois to advocate for OTs role in post-secondary transition.

**S9 - Doing, Being, and Becoming: Embracing Integrative and Complementary Approaches In Occupational Therapy Practice and Self Care** Content Area(s): General, Mental Health

**Speaker(s):** Beverly A Menninger MA, OTR/L

**Description:** This short course will explore doing, being and becoming through the responsible use of integrative and complementary approaches to care as occupational therapists as well as for self-care. Various modalities will be presented including mindfulness, meditation, Reiki, yoga, and breath work just to name a few. Participants will be introduced to various approaches, discuss how they can be integrated into practice in a variety of settings as well as participate in brief practice during the session.

**S9A - Ethics** Content Area(s): Ethics, General

**Speaker(s):** Anne Kiraly-Alvarez OTD, OTR/L, Minetta Wallingford DrOT, OTR/L

**Description:** Understand the potential sanctions that can result from a violation of ethics. After completing this course, attendees will have met the state's ethics course requirement for this license renewal period.

11:00am - 12:30pm Business Meeting and Lunch (1.5 CEUs)

12:45pm - 2:15pm Short Courses (1.5 CEUs)

**S11 - A multi-disciplinary approach to mealtime using the Allen Cognitive Disabilities Theory in a hospital setting** Content Area(s): Mental Health, Geriatrics

**Speaker(s):** Joel M Bove MS, OTR/L, DCCT

**Description:** Participants in this session will be introduced to the role of occupational therapy as a consultant for self-feeding in an acute medical setting. Strategies will be introduced and tools provided for increasing mealtime participation of clients experiencing varied levels of cognitive impairment. Participants will gain a better understanding of how OT can provide multi-disciplinary training to mediate risk factors such as choking and aspiration while improving clients' functional performance.

**S12 - A students guide to fieldwork success from the perspective of your future Clinical instructor** Content Area(s): Academics/Fieldwork

**Speaker(s):** Jacob Garrison OTR/L, Rick Camacho OTR/L, Janet Adcox OTR/L

**Description:** In an effort to ease student anxiety and to increase clinical confidence we propose a 3 person panel made up of clinical instructors from varying areas of practice to discuss expectations, communication strategies, professional behavior, time management, documentation strategies, and address any other questions or concerns students may have prior to starting their clinical fieldwork.

**S13 - Implications for OT Leadership in End-of-Life Using the Namaste Care Program** Content Area(s): Geriatrics, Mental Health

**Speaker(s):** Pooja A Patel DrOT, OTR/L, Christopher Yang DrOT, OTR/L

**Description:** The Namaste Care program aims to meet the needs of geriatric persons to maximize their quality of life. The program focuses on individualized activities of daily living (ADLs) and meaningful activities in various settings, with an emphasis on skilled nursing facilities. The focus on ADLs and meaningful tasks directly relates to the practice of occupational therapy and creates an emerging area of practice for leaders and program developers in the profession which aligns with AOTA's Vision 2025.

## Saturday, October 5th

## 12:45pm - 2:15pm Short Courses (1.5 CEUs) - Continued

**S14 - Digging Out of the Handwriting Rut: Shifting School-based OT's Focus to Life Skills & Transition** Content Area(s): Schools, Pediatrics**Speaker(s):** Phoebe Jerousek MS/OT, OTR/L, June Weckler DrOt, MOT, OTR/L**Course Description:** Over the years, school-based occupational therapists have become increasingly pigeon-holed into the rut of being looked at by colleagues as the handwriting people. However, the spectrum and potential of what school-based OT can address is so very much broader. By focusing on occupation-based life skills, pre-vocational skills, and transition-focused therapy sessions, therapeutic goals, and consultation with other providers, school-based occupational therapists can prepare their students for what is ahead, resulting in potential for improved independent living and vocational readiness outcomes.**S15 - Brachial Plexus Birth Palsy 0-3 years: critical period of intervention** Content Area(s): Pediatrics, Early Intervention**Speaker(s):** Kristina Stein OTR/L, Kaitlin Kieras OTR/L**Course Description:** Brachial plexus birth palsy (BPBP) can result in significant and chronic functional impairments. Therapist's must have a thorough knowledge of therapeutic interventions and critical periods for surgical interventions to help a child achieve maximum outcomes. This presentation will review brachial plexus specific outcome measures, evidence based therapeutic interventions for the early intervention period and recommendations for surgical intervention based on the literature.

## 1:00pm - 4:00pm 3 Hour Workshop (3.0 CEUs)

**S23 - Next Gen OTs—Crushing Your Career Goals!**

Content Area(s): General, Academics/Fieldwork

**Speaker(s):** Brandon Seigel CRP**Course Description:** You've completed the classes, internships and now about to graduate, what's next? Are you prepared to launch a successful career in an ever-changing healthcare environment? From formulating career goals to creating effective resumes, cover letters, etc., this presentation will uncover essential strategies from inside the hiring lines and help students prepare for entering the clinical workforce.

## 2:30pm - 4:00pm Short Courses and Research Platforms (1.5 CEUs)

**S16 - Occupational Therapy's Role in Early Stages of Pediatric Cancer: Advancing The Profession in an Emerging Practice Area (SC)** Content Area(s): Pediatrics, General**Speaker(s):** Lauren Stone OTD, OTR/L**Course Description:** Occupational therapy has a distinct role in cancer rehabilitation across the continuum of care. This course will address the growing need for rehabilitation, and specifically occupational therapy services, as part of the standard of care in the early stages of treatment, and opportunities to advance the profession in pediatric cancer care.**S17 - Doctoral Capstones: Opening Doors for Occupational Therapy Practice (SC)** Content Area(s): Academics/Fieldwork, General**Speaker(s):** Anne F Kiraly-Alvarez OTD, OTR/L, SCSS, Kathy Preissner EdD, OTR/L, FAOTA**Course Description:** Since three occupational therapy (OT) programs in Illinois have recently transitioned or are planning to transition to an entry-level doctoral (OTD) curriculum, the purpose of this presentation is to review two major components of the OTD curriculum: the Capstone Experience and the Capstone Project. The Capstone Experience is different from traditional Level II Fieldwork in that it prepares OTD students in advanced skills such as clinical practice skills, program development, administration and management, leadership, research, and education. The Capstone Project provides an opportunity for students to apply research and theories to OT practice. Presenters will share how these components have been developed within their programs and how Illinois OT practitioners can be involved and explore the possible Capstone opportunities within their own practice settings.**S18 - Establishing Community-based Internship Opportunities for Young Adults With Developmental Disabilities (SC)** Content Area(s): Development Disabilities**Speaker(s):** Evguenia Popova MS, OTR/L, Paulina Pei BS, MSOT student, Sydney Warren BSW, MSOT student, Lisa Lodesky BA, MSOT student, Amanda Pineda BS, MSOT student**Course Description:** Despite a strong desire for autonomy and employment, work and internship opportunities remain scarce for young adults with developmental disabilities. The purpose of this presentation is to present the process of design and implementation of a supported internship opportunity for a young adult with Down syndrome. A case-study will be used to present the intern's first-person account of the internship experience in a community-based setting.**S19 - A Survey of Occupational Therapists' Practice Habits for Clients with Cognitive Impairment: Illinois Findings (SC)** Content Area(s): Adult Physical, Development Disabilities**Speaker(s):** Steven J Taylor OTD, Briana Certa B.S., Megan Hunzeker B.S., Madison Lull B.S.**Course Description:** Occupational therapists (OTs) can play a vital role in addressing cognitive impairment; however, research is lacking with regard to clinical practice guidelines and interventions used to treat cognitive impairment. The aim of this presentation is to provide an overview of the results of a nationwide survey on treatment practices for cognitive impairments, specifically identifying practice trends for Illinois respondents and how these compare with nationwide findings. Discussion will further identify how these findings may provide guidance for future service provision when working with individuals with cognitive impairment.

Saturday, October 5th

2:30pm - 4:00pm Short Courses and Research Platforms (1.5 CEUs) - Continued

**S20 - The Acceptability of Cognitive Assessments to Older Adults (RP)**

**Content Area(s):** Geriatrics, General

**Speaker(s):** Sarah L Austin PhD, OTR/L, Grace Boyle MOTS, Kelli Cardine MOTS, Mekell Johnson MOTS, Callie Nollan MOTS

**Course Description:** Many experts have recommended that occupational therapists use more occupation-based assessments of cognition. In this study, we administered one paper and pencil assessment of cognition and one that was occupation-based to 12 older adults. During and after each assessment we asked participants to share their thoughts and feelings in order to better understand factors that affect the acceptability of different cognitive assessments to this population.

**S21 - Structural competency: A framework to understand needs of Arab American Families of children with Autism (RP)**

**Content Area(s):** General, Pediatrics

**Speaker(s):** Randa Abdelrahim MSc.

**Course Description:** The purpose of this educational session is to illustrate the value of considering social structures as proxies that influence accessing and utilizing rehabilitation services. The focus will be on examining structures that often shape the experiences of Arab American families of children with Autism that are related to rehabilitation. The discussion will focus on thinking about how to move from cultural to structural competency without reducing the importance of learning about the different traditions and beliefs of Arab American families.

## Poster Sessions

Posters will be on display all day in a designated room and Speaker(s) will be available on Friday from 2:45pm-4:15pm or on Saturday from 12:45pm-2:15 pm depending on the day they are presenting.

### Friday Poster Session 2:45pm - 4:15pm (1.5 CEUs)

#### PF1 - Life, Limb, and the Pursuit of Sport

**Content Area(s):** General, Community Practice

**Speaker(s):** Paige DeBoer OTS, Haley Babb OTS

**Contributing Authors:** Hilary Servatius OTS, Mark Kovic OTD, OTR/L, FAOTA

**Poster Description:** This study explored the negotiation of occupational identity for persons with limb loss through access to adaptive sports to demonstrate how clinicians can best help their clients achieve positive identity within chosen environments and through social interaction. Six individuals with varying types of amputation participated in semi-structured interview, demographic survey, and Occupational Self-Assessment to provide researchers with extensive information regarding their experience with amputation, occupational identity formation, and participation in adaptive sport. It is critical for clinicians to understand the vital role they play in assisting individuals with limb loss in forming a positive occupational identity following an amputation.

#### PF2 - The Importance of Parental Involvement: Parents Perceived Role in Facilitating Self-Determination in Young Adults with Intellectual Disabilities

**Content Area(s):** Developmental Disabilities, Academics

**Speaker(s):** Marie-Claude Touchette MHS, OTR/L, Zoey Dolson-Groh OTS, Monica Hutchison OTS, Martina Koeva OTS, Morgan Lacher OTS

**Contributing Author(s):** Alexandra Long OTS, Andres Olivares OTS

**Poster Description:** This basic interpretive qualitative study explores parental experiences of having a child with an intellectual disability (ID) enrolled in a post-secondary education (PSE) program. PSE programs provide assistance to young adults with differing levels of ability in the culmination of academic and overall life skills. Parents typically play a role in these individuals' lives by making sure they are successful in their endeavors and maintain active roles in their children's lives. Through the collection of interviews from 8-10 parents of students in the Elmhurst Learning and Success Academy, we investigate the dynamic question: what do parents of young adults with intellectual disabilities enrolled in post-secondary education perceive as their role to facilitate self-determination and student achievement?

#### PF3 - Creating a Support Group for Individuals With Low Vision

**Content Area(s):** Community Practice, General

**Speaker(s):** Brandy Ferrell OTA Student, Rylee McDonough OTA Student, Ann Marotta OTA Student

**Poster Description:** This purpose of our community project is to provide Krecia Sweeney, a Mchenry County College (MCC) student with a low vision condition, reasonable and attainable means in establishing a low vision support group on the MCC campus.

#### PF4 - Creating a sensory walk to accompany a story time at a local library

**Content Area(s):** Pediatrics, Community Practice

**Speaker(s):** Dawn Lyons OTA Student, Kyle Radosevich OTAS, Jessica May-King OTAS, BFA

**Poster Description:** The Crystal Lake Library (CLL) has asked the Occupational Therapy Assistant (OTA) program at McHenry County College to develop a sensory walk that can go along with a story offered at the library every second Saturday of the month. We as a team came up with customizing an interactive walk for every eventuality. They will be able to tailor the walk to accompany the story they are telling while reaching children of all developmental stages from birth to 6. Since the library takes their story time on the road, the team developed a portable sensory walk that can be easily stored and assembled when desired.

#### PF6 - Benefits of a Sensory Path for Riders at a Therapeutic Riding Farm

**Content Area(s):** Academics/Fieldwork, Community

Practice

**Speaker(s):** Cheryl Janu OTA Student, Zulema Carrillo OTA Student, Caressa Sorensen OTA Student

**Poster Description:** Main Stay Therapeutic Farm requested our help to create a specific program that would benefit their riders. Their idea was to create a sensory path in the farm's indoor arena so riders, ages 3-17, could warm up before their horseback riding sessions. We acted as occupational therapy consultants and provided them with research to back up their plan. Our group reviewed the environmental needs and developed a marketing plan and budget to present to our community partners. We also analyzed Main Stay's strengths, weaknesses, opportunities, and threats (SWOT).

#### PF7 - Task-specific training: A Literature Review with Concept Map for Knowledge Translation to an Outpatient Clinic for Neurorehabilitation in Adults

**Content Area(s):** Adult Physical Disabilities

**Speaker(s):** Eron Bozec MOT, OTR/L

**Contributing Authors:** Namrata Grampurohit PhD, OTR/L, Mary Jane Mulcahey PhD, OTR/L

**Poster Description:** Occupational therapy practitioners frequently incorporate task-specific training in adult neurorehabilitation. The literature review on task-specific training will present practitioners with the current evidence for application within an outpatient clinical setting. The concept map was completed to summarize the findings of a large body of research within stroke, spinal cord injury, traumatic brain injury, and multiple sclerosis

#### PF8 - Nutritional and Caregiving Support Interventions for Premature Infants with Bronchopulmonary Dysplasia in the Neonatal Intensive Care Unit

**Content Area(s):** Pediatrics, Early Intervention

**Speaker(s):** Paulina Pei MSOT, Ruth Glass MSOT, Julia Ells MSOT

**Poster Description:** The purpose of this poster session is to present the findings from a literature review which examined the effectiveness of various nutritional and caregiving support interventions in improving oral feeding skills for preterm infants or infants with bronchopulmonary dysplasia (BPD).

#### PF9 - Perceptions of Attributing Factors of Prosthesis Acceptance or Rejection with Individuals Experiencing Congenital Upper Limb Differences

**Content Area(s):** Pediatrics, Technology

**Speaker(s):** Theresa Christopher BS, OTS-II, Allyson Loris BS, OTS-II, Lindsey Lhotka BS, OTS-II

**Contributing Author:** Susanne Higgins Faculty Advisor, OTD, OTR/L, CHT

**Poster Description:** Prosthetic devices are designed to help individuals with limb differences to participate in activities of everyday life (Åstlie et al., 2012). However, research has shown that individuals have varied experiences of acceptance and rejection of prosthetic devices (Biddiss & Chau, 2007; Widehammar, Pettersson, JaneslÅtt & Hermansson, 2017; Wright, Hagen & Wood, 1995). The purpose of this qualitative study is to explore perceived factors of prostheses acceptance and rejection as reported by children with congenital upper limb differences and/or their parents. This research study utilized semi-structured interviews to investigate prosthesis use and non-use during participation and perceived factors related to prosthesis acceptance and rejection.

## Poster Sessions

### Friday Poster Session 2:45pm - 4:15pm (Continued)

#### PF10 - Experiences of Social Participation for Individuals with Dementia

**Content Area(s):** Geriatrics, Mental Health

**Speaker(s):** Mallory Siska OTS, Marissa Vavra OTS

**Contributing Authors:** Caitlyn Orawiec OTS, Minetta Wallingford DrOT, OTR/L

**Poster Description:** This qualitative descriptive study investigates the experiences of social participation from the perspectives of individuals with dementia or cognitive impairment and their caregivers. The findings of this study illustrate areas in which occupational therapists, other medical professionals, caregivers, and institutional staff may identify supports and barriers to social participation. The findings of this study illuminate the individualized and unique aspects of the desired degree and type of social participation for individuals with dementia.

#### PF11 - General Education Teachers' Perspectives on Collaboration with Occupational Therapists in the School Setting

**Content Area(s):** Schools, Pediatrics

**Speaker(s):** Erin Bradley OTS-III, Elizabeth Hassett OTS-III, Antonio Mazza OTS-III

**Contributing Authors:** Gifty Abraham OTD, OTR/L

**Poster Description:** This session will outline general education teacher's views on collaborating with occupational therapists (OTs) in the school. Previous studies indicate that collaboration between teachers and OTs improves student performance and promotes positive outcomes in school-based occupational therapy. Existing research on teacher and OT collaboration in the school setting has not sufficiently included general education teachers' perspectives. This study addresses the gap in the literature by understanding general education teachers' perspectives on collaborating with OTs and their knowledge about roles and responsibilities of OTs in the school setting.

#### PF12 - The Effect of Hippotherapy on Social Interaction in Children with Autism Spectrum Disorder: A Multiple Case Study

**Content Area(s):** Pediatrics, Developmental Disabilities

**Speaker(s):** Rachel Gascoigne OTS

**Contributing Authors:** Ciara Fitzpatrick OTS, Glen Cotton OTD, OTR/L, HPCS

**Poster Description:** Hippotherapy is a nontraditional therapeutic intervention strategy that incorporates equine movement. The evidence supporting the effect of hippotherapy on children with autism spectrum disorder (ASD) is limited (Borgi et al., 2016; Llambias, Magill-Evans, Smith, & Warren, 2016; Taylor, 2009). The purpose of this poster session is to report the findings of a multiple case study demonstrating the effect of an eight-session occupational therapy intervention incorporating hippotherapy on improving the social interaction skills of four children with ASD. Results of this study showed that all four children demonstrated improvements in their social interaction skills, especially those necessary for participation in play and leisure activities, and parents of these children reported improvements in their child's social interaction skills. This study shows that occupational therapy incorporating hippotherapy may be an effective intervention strategy for occupational therapists to consider for their pediatric clients with ASD.

#### PF13 - Proactive Interdisciplinary Rehabilitation for People with Parkinson's Disease: An Occupational Therapy Program Evaluation

**Content Area(s):** Adult Physical Disabilities, General

**Speaker(s):** Alan Sadural OTS

**Contributing Authors:** Miriam Rafferty PT, DPT, PhD, NCS, Joelle Johnson OT, OTD, OTR/L, Danielle Williams SLP, MS, CCC-SLP, Jillian MacDonald PT, DPT, NCS, Laura Stoff MPH

**Poster Description:** Clinical practice guidelines recommend interdisciplinary rehabilitation for people with Parkinson's disease (PD) by a team including occupational therapy (OT), speech therapy (ST), and physical therapy (PT). In early PD, proactive rehabilitation includes (1) baseline evaluations, (2) exercise prescription and self-management advice, and (3) addressing early impairments in walking, balance, voice, dexterity, and occupational performance. The purpose of this study is to describe the delivery patterns, patient characteristics, and baseline performance of people referred to proactive rehabilitation at the Shirley Ryan AbilityLab, with a focus on occupational therapy.

#### PF14 - When is it appropriate for therapy to intervene for patients with acute DVTs?

**Content Area(s):** General, Geriatrics

**Speaker(s):** Michelle Koenigsknecht MS, OTR/L

**Poster Description:** Asks the question, when is it appropriate for therapy to intervene for patients with acute deep vein thrombosis (DVT) in the acute care setting? Reviews medical management and prevention of acute DVTs, as well as risk factors to guide the clinical reasoning for therapy intervention. Also discusses occupational therapist's role in patients in the hospital that are diagnosed or at risk for DVTs.

#### PF15 - Successful Acute Rehabilitation of a Bariatric Patient in a Non-Bariatric Specialty Center: A Case Study

**Content Area(s):** Adult Physical Disabilities, General

**Speaker(s):** Ashley Barnes MOT, OTR/L

**Poster Description:** This poster presentation explores the practical day-to-day clinical issues faced by the care team during a 38-day acute rehabilitation stay for a patient weighing 676 pounds. The patient was admitted at a totally dependent functional level and progressed enough to be admitted home with family assistance and home health services. As of 60 days after discharge, the patient was still successfully progressing at home without readmission.

#### PF16 - Exploring the Occupational Needs of Adolescents Reintegrating into the Community After Juvenile Incarceration/Detention: Supports, Barriers, And the Role of Occupational Therapy

**Content Area(s):** Pediatrics, Community Practice

**Speaker(s):** Marquie Price OTS, Arielle Ramirez OTS

**Contributing Authors:** Anna Guittar OTS, Anne Kiraly-Alvarez OTD, OTR/L, SCSS

**Poster Description:** This poster will highlight a study that was done to identify the occupational needs of adolescents as they reintegrate into the community after juvenile incarceration/detention. The five identified occupational needs include: occupational engagement, leadership role participation, structured routines, supportive environments, and justice in institutional environments. Based on AOTA's Vision 2025 and core concept of occupational justice, occupational therapy practitioners have an obligation to ensure that this population engages in occupations to successfully reintegrate into their community.

#### PF17 - Perspectives of Aging Adults on How Their Physical and Social Environments Affect Engagement

**Content Area(s):** Geriatrics, Adult Physical Disabilities

**Speaker(s):** Melissa Donegan OTS-II, Elizabeth Hein OTS-II, Jacob Ditsch OTS-II

**Contributing Authors:** Lisa Mahaffey PhD, OTR/L, FAOTA

**Poster Description:** As people age, their physical and social environments have a major influence on their health as well as engagement in meaningful occupations. There is little research that explores how aging adults consider the social and physical environment as a factor in occupational engagement. This grounded theory study explored this question with a group of adults between ages 50 and 65 who work full time at a medical university, and do not identify with a disability.



## Poster Sessions

Posters will be on display all day in a designated room and Speaker(s) will be available on Friday from 2:45pm-4:15pm or on Saturday from 12:45pm-2:15 pm depending on the day they are presenting.

### Friday Poster Session 2:45pm - 4:15pm (1.5 CEUs) - Continued

#### PF18 - Fall Prevention for Individuals with Intellectual Disabilities Fieldwork

**Content Area(s):** Developmental Disabilities, Academics/

**Speaker(s):** Elizabeth Wanka DROT, OTR/L, Corisa Calvert BS, Tasneem Hasan BS, Allison Hicks BS, Michaela Kumer BS

**Contributing Authors:** Meghan Seymour BS, Anders Wallock BA

**Poster Description:** This study utilized a pre-test, post-test research design to address whether educational modules on fall prevention increase caregiver knowledge, self-efficacy, and/or awareness of fall risk factors associated with individuals with intellectual disabilities.

### Saturday Poster Session 12:45pm - 2:15pm (1.5 CEUs)

#### PS19 - Entry-Level Competence: Are Occupational Therapists Adequately Prepared to Address Upper Extremity Dysfunction? An Employers' Perspective.

**Content Area(s):** Academics, Adult Physical Disabilities

**Speaker(s):** Marie-Claude Touchette MHS, OTR/L

**Contributing Authors:** Laura Santurri PhD, MPH, CPH, Corrin Pitluck, Mary Ellen Stoykov

**Poster Description:** Although occupational therapy entry-level competence has been explored from the perspective of occupational therapy students, clinical instructors, novice therapists, and clinicians (Dimick et al., 2009; Hodgetts et al., 2007; McCombie & Antanavageb, 2017; Wallingford & Knecht-Sabres, 2016), there are limited studies exploring entry-level competence of occupational therapists from the employers' perspective. Furthermore, with occupational therapists often treating upper extremity dysfunctions, occupational therapists entering the job market are expected to have the skills needed to effectively treat upper extremity dysfunctions. However, there are no specific guidelines regarding expected competencies required from an entry-level therapist treating UED. This study explores the current perception of employers regarding entry-level occupational therapists' expertise in the treatment of upper extremity dysfunction.

#### PS20 - Function vs. Cognitive Return in Patients with a Subarachnoid Hemorrhage

**Content Area(s):** General, Adult Physical Disabilities

**Speaker(s):** Michelle Koenigsknecht MS, OTR/L

**Poster Description:** Case study discussing the functional versus cognitive return in patients with a subarachnoid hemorrhage. This case reviews the importance of occupational therapists objectively measuring cognition and function in patients with SAH in the acute care setting. This case study focuses on the following: using evidence to best manage neurological patients with primarily cognitive deficits, appropriately educating the interdisciplinary team on optimal disposition, and occupational therapists advocating for patients needs and appropriate resources across the spectrum of care.

#### PS21 - Occupational Participation and Quality of Life of Older Adults Residing In Assisted Living

**Content Area(s):** Geriatrics, Administration

**Speaker(s):** Greta Zilyte OTS

**Contributing Authors:** Lindsay McIlwain OTS, Lisa Knecht-Sabres OTR/L, DHS

**Poster Description:** Unfortunately, many of the activities offered at assisted living facilities are generic in nature and follow a one size fits all mentality, putting its residents at risk for occupational deprivation (Westberg, Gaspar, & Schein, 2017). The primary aims of this study were to: (1) explore activity engagement in an assisted living facility; (2) explore the supports and barriers for occupational participation in an assisted living facility; (3) understand how meaningful occupations impact quality of life for older adults in an assisted living facility; and (4) gain a better understanding of residents' recommendations regarding activities offered in an assisted living facility.

#### PS22 - Creating an understanding of what social skills are valued by individuals with Autism Spectrum Disorder: A phenomenological study to enhance interdisciplinary collaboration and client-centered care

**Content Area(s):** Academics/Fieldwork, Mental Health

**Speaker(s):** Bhumi Bhatt MS, OTR/L, Nicole Butcher OTS, Jasmine O'Donnell OTS, Pauline Millares OTS, Kathleen Burke OTS

**Contributing Authors:** Alexis Andricopoulos OTS, Marie-Catherine Joutras OTS

**Poster Description:** The purpose of this educational poster session is to inform clinicians about a study designed to understand what social skills are valued by college-aged students with ASD. The authors of this study hope to use the results of this study to guide interdisciplinary collaboration between speech-language and occupational therapy to promote holistic-client centered care.

#### PS23 - Effectiveness of Telehealth in Reducing Emergency Room Visits, Hospital Readmissions, Length of Stay, and Cost Among Adults

**Content Area(s):** Adult Physical Disabilities, Technology

**Speaker(s):** Julia Majkut MSOT Student, Ashley Vincent MSOT Student, Matthew Linas MSOT Student

**Contributing Authors:** LaJuan Criswell MSOT Student

**Poster Description:** This presentation will provide an evidence-based and critical lens to promising OT interventions delivered via telehealth. Audiences will identify the potential of OT in telehealth and recognize past challenges to learn from in order to move the field forward. With limited research on OTs using telehealth, this presentation will provide strategies in efficiently examining bodies of evidence that address telehealth in order to promote a more well-informed practice.

#### PS24 - Animal-Assisted Therapy for Individuals with Dementia: Screen and Program Protocol

**Content Area(s):** Geriatrics, General

**Speaker(s):** Erin Hocker OTD Student

**Contributing Authors:** Brenda Hughes DrOT, MA, OTR/L

**Poster Description:** This session will discuss the current evidence on the use of Animal-Assisted Therapy (AAT) for people with dementia, and then apply this evidence to create a comprehensive AAT screening and program protocol based on Allen's Cognitive Levels and the MOHO theory.

## Poster Sessions

### Saturday Poster Session 12:45pm - 2:15pm (1.5 CEUs) - Continued

- P25 - The Occupational Adaptation after a Violently Acquired Spinal Cord Injury: The Experience of Men** **Content Area(s):** Adult Physical Disabilities  
**Speaker(s):** Michelle Samansky OTS-III, Courtney Gura OTS-III  
**Contributing Authors:** Summer Smith OTS-III, Glen Cotton OTD, OTR/L, HPCS  
**Poster Description:** This session will describe the methods and results of a qualitative phenomenological study that examined the lived experience of men following a violently acquired spinal cord injury (VASCI). Analysis of individual semi-structured interviews of three men with VASCI revealed five themes that represent the lived experience of occupational adaptation after a VASCI: (1) a new awareness of barriers to participation, (2) adapting to new ways of doing, (3) a new start, (4) navigating the environment with the support of family and friends, and (5) overcoming an inaccessible home. This information will be used to provide clinicians with information about the occupational adaptation process from those who have lived through this experience. We hope by sharing this knowledge occupational therapy clinicians will be better informed about the occupational adaptation process of those who have lived through this life-altering event and can be better equipped to support their clients during the recovery process.
- 
- PS26 - Occupational Therapy and Life Skill Acquisition for Young Adults With Intellectual Disability** **Content Area(s):** Developmental Disabilities, General  
**Speaker(s):** Cassidy O'Connell OTS, Madeline Blaha OTS, Alyssia Evans OTS  
**Contributing Author:** Kim Bryze PhD, OTR/L  
**Poster Description:** The transition from adolescence into adulthood is often challenging for young adults with intellectual disability, especially with the responsibilities of enacting important life skills in their home settings. Young adults with intellectual disability are often challenged to generalize life skills task performance from their school to the home environment. This study examined the effect of direct, adaptive occupation-based intervention on the ADL performance of three young adults in their home settings. Case study methods were employed using both standardized and qualitative measures for assessments through a weekly series of individualized interventions for the young adult participants as well as consultations provided to their parents. Results indicated significant improvements in all participants' motor and process skills and ADL performance, and enhanced confidence, participation, and integration of life skills tasks into their daily home lives.
- 
- PS27 - Occupational Performance Coaching in Pediatrics** **Content Area(s):** Pediatrics, Developmental Disabilities  
**Speaker(s):** Stephanie Alvarado OTS, Drew Baker OTS, Erin O'Callaghan OTS, Susan Cahill PhD, OTR/L, FAOTA  
**Poster Description:** Occupational performance coaching refers to the coaching of caregivers using specific strategies to promote a child's success in occupational performance. Integrating occupational performance coaching into the delivery of pediatric occupational therapy services has been found to be effective for increasing the participation of children with disabilities. The purpose of this poster is to review the evidence associated with occupational performance coaching.
- 
- PS28 - Community-based Health Programs for Mexican Americans: Addressing Diabetes-Related Risk Factors** **Content Area(s):** Community Practice, General  
**Speaker(s):** Sara Nagengast OTS, Veronica Meza OTS, Susan Cahill PhD, OTR/L, FAOTA  
**Poster Description:** Lifestyle related diabetes is a significant health concern for many Mexican immigrants. Community-based health programming has been found to be effective in reducing diabetes-related risk factors for Mexican immigrants engaged in the acculturation process. The purpose of this poster is to review the evidence associated with community-based health programs for this population.
- 
- PS29 - Occupational Therapists Perceptions of Entry-Level OT Hand Therapy Practice, Knowledge, Skills, and Competencies** **Content Area(s):** Hand Rehabilitation, Academics  
**Speaker(s):** Dr. Susanne Higgins CHT, Brian Creeron OTS, Abraham Varughese OTS  
**Poster Description:** The primary goal of this study is to gain a better understanding of the perceptions that occupational therapists (OTs) who specialize in hand therapy believe to be necessary for entry-level OTs to work in a hand therapy setting. Interviews were conducted with OTs who practice in hand therapy settings. Questions addressed: cognitive and psychomotor skills, fundamental and specific knowledge, attitudes, and professional behaviors that are necessary for entry-level OTs to begin their practice in hand therapy settings. Entry-level occupational therapy (OT) is directed at the generalist practice level which means that there might only be a few opportunities for them to gain knowledge, skills, and competencies related to the field of hand therapy.
- 
- PS30 - Putting the heart of OT into inpatient therapy pediatric groups** **Content Area(s):** Pediatrics, Mental Health  
**Speaker(s):** Emily McLaughlin OTR/L, OTD, Katie Needham OTR/L, MOT, Lee Ryan OTR/L, MS  
**Poster Description:** An occupational therapy (OT) team, at a free-standing pediatric acute care hospital, identified a need for group therapy secondary to the prolonged hospitalizations that children with complex medical needs require. The OT team targeted the cardiac intensive care unit (ICU) as a result of the increased length of stay required for children waiting for heart transplants and recovering from cardiac surgeries. Following a thorough literature review of group therapy and cardiac rehabilitation, it was determined that group therapy may be of benefit to patients in this setting. As a result, the OT team developed a group therapy program for children with complex cardiac conditions and has begun implementing groups for similarly aged patients. The OT team has observed many positive impacts in both sensorimotor and psychosocial skills.
- 
- PS31 - The Role of OT in Supporting Individuals with Autism in the Acute Care Setting** **Content Area(s):** Developmental Disabilities, General  
**Speaker(s):** Katie Coakley OTR/L, Abigail Wetzel OTS-II  
**Poster Description:** The acute care setting can be overwhelming and challenging for anyone. It can be an especially difficult environment for individuals with Autism Spectrum Disorder (ASD). This poster will discuss the role of occupational therapy with individuals with ASD and the unique contributions they can make to the healthcare team for individuals with ASD in the acute care setting. This poster will present a student project aimed at educating the healthcare team on the unique communication and sensory needs of individuals with ASD and the creation of a kit of resources to support individuals with ASD in the acute care setting.

## Poster Sessions

### Saturday Poster Session 12:45pm - 2:15pm (1.5 CEUs) Continued

**PS32 - Perceptions of Access and Disability Services in Relation to Implementation and Usage of Assistive Technology in a Post-Secondary Institution** **Content Area(s):** Technology, Developmental Disabilities

**Speaker(s):** Daniel Rortvedt OTD, OTR/L, Sarah Ahmed OTS, Melissa Avila OTS, Stephanie Bruns OTS, Anne Kaczowski OTS

**Poster Description:** This session will describe a proposed participatory action research study to be conducted with students and faculty at a post-secondary institution regarding their experiences with receiving and implementing accommodation services, including the provision of assistive technology. The findings of this study will determine areas of improvement in regards to assistive technology as an academic support, and will help illustrate the distinct role of occupational therapy in collaborating with an Access & Disabilities Services department to promote meaningful outcomes for post-secondary students with disabilities.

**PS33 - How Does Performance Art Shape Occupational Identity and Promote Empowerment for Disabled Artists?** **Content Area(s):** General

**Speaker(s):** Kristin Monical OTS, Kate Wettergren OTS

**Contributing Author:** Lisa Mahaffey PhD, OTR/L, FAOTA

**Poster Description:** Performance art is considered a non-traditional art form which is drawn from acting, poetry, music, dance and painting. It is typically performed before a live audience and often saturated with political overtones. A disabled performance artist can use their live exhibition to test ideas and involve expression in an unconventional experience or event to send a message to their spectators about disability. Using a qualitative phenomenological design based in narrative inquiry researchers interviewed 6 disabled performance artists with both physical and/or mental disabilities and learned how performance art shapes their occupational identity and helps facilitate empowerment in their lives. Themes yielded from this original research will be discussed.

**PS34 - Occupational therapy interventions to promote and support client self-advocacy: A systematic review of the literature** **Content Area(s):** General

**Speaker(s):** Theresa Guzaldo OTS, Abraham Kim OTS, Kimberly Lieberman OTS, Erin Thrasher OTS, Laura Puymbrouck PhD, OTR/L

**Poster Description:** This study is a systematic review that examined the content and quality of occupational therapy interventions directed at client development of self-advocacy; specifically, the quality, key features, and effectiveness of occupational therapy interventions currently existing within professional literature. The study aims to determine the fundamental characteristics of those interventions identified as having the highest level of evidence to promote and support intervention design in order to optimize development of client self-advocacy.

**PS35 - The Lived Experience of Functional Movement Disorder** **Content Area(s):** Adult Physical Disabilities, General

**Speaker(s):** Stephanie Zuba-Bates OTD, MS, OTR/L, Antonia Gustaitis MOTS, Zeba Khan MOTS, Lisa Musto MOTS

**Contributing Authors:** Jai yoon Lim MOTS, Elizabeth Ramirez MOTS

**Poster Description:** The purpose of this presentation is to present research findings on the lived experience of people living with Functional Movement Disorder (FMD). It aims to educate OT practitioners and students about Functional Movement Disorder from the voices of those living with the disorder. It will include an analysis of data from qualitative interviews with 9 people living with FMD and a discussion of the major themes identified by the research participants including what they would like health care professionals to know.

**PS36 - Perceptions of academic preparation for professionalism in fieldwork** **Content Area(s):** Academics/Fieldwork, General

**Speaker(s):** Rebecca Kvasnicka DrOT, MOT, OTR/L, Ashley Akiyama OTS, Lauren Calderone OTS, Audrey Fields OTS, Elizabeth Hughes OTS

**Contributing Author:** Arviola Pemaj OTS

**Poster Description:** Research indicated students and fieldwork educators place different values on professionalism and that occupational therapy academic programs address professionalism by imbedding it throughout the curricula and in specific courses. This research addresses student perceptions of academic preparation for professionalism and explores the findings comparing student perceptions of their preparation with academic program curricula to help academic programs prepare students for fieldwork and practice.

**PS37 - The Meaning of Work for Adults Choosing To Work Beyond Traditional Retirement** **Content Area(s):** Geriatrics, Work Rehabilitation

**Speaker(s):** Melanie Ellexson DHsC, OTR/L, FAOTA, Molly Mceville MSOT, Amanda Rage MSOT, Connor Rice MSOT, Aviana Valdez MSOT, Erica Walsh MSOT

**Poster Description:** This poster presents research to understand the the motivation for, and importance of work, for adults working beyond traditional retirement age. Photo voice is used to capture the importance of continuing meaningful occupations for these older workers and in depth interviews help to understand how work defines roles and influences daily living and health in older adults

**PS38 - Effect of Participation in Community Support Groups on Healthcare Students' Beliefs and Perceptions of Disability** **Content Area(s):** Academics/Fieldwork, General

**Speaker(s):** Caren Schranz DrOT, OTR/L, Eileen Brann PhD, CCC-SLP, Carolyn Russell OTS, Christine Brown OTS, Kyle Ferraro OTS

**Contributing Author:** Christian Anderson OTS, Karen Todd OTS

**Poster Description:** An exploration of the effect of participation in community support groups on healthcare students' beliefs and perceptions of disability.

## Special Interest Section Sessions

Special Interest Section discussion sessions will be held in a designated area of the grand ballroom. Come join your colleagues and discuss current topics related to the special interest sections listed below.

### Friday, October 4th

#### 9:15am - 10:15am

**Moderator:** Lori Bravi MS, OTR/L, BCPR, CLT

**Content Area(s):** Adult Physical Disabilities

**Title:** Oculomotor Control After Concussion: How do we objectively measure Deficits and progress?

**Audience:** Student, Entry Level, Intermediate, Advanced

**Description:** The recent increase in Post Concussive Syndrome admissions to a local outpatient therapy department has lead to more refined practices in screening for and treating pursuits and saccades oculomotor control. Historically, there are only gross screening processes available to Occupational Therapists to identify potential deficits in these areas. Furthermore, there is a lack of documented interventions to specifically address these foundational movements necessary for functional vision. What are vision therapists using to assess function at baseline and discharge, and what interventions are enabling patients to progress to tolerating normal range?

#### 10:30am - 11:30am

**Moderator:** Stephanie Zuba-Bates OTD, MS, OTR/L, Kermeisha Davenport MHA, OTR/L

**Content Area(s):** Academics/Fieldwork, General

**Title:** Practicing What We Preach: The Challenges of Designing and Implementing An Interprofessional Education (IPE) Curriculum

**Audience:** Entry Level, Intermediate, Advanced

**Description:** The purpose of this session is to discuss the development and implementation of a curriculum of interprofessional education events across multiple professional healthcare programs in an academic institution. It will include a discussion about the challenges the interprofessional education committee at Chicago State University faced and strategies for overcoming those challenges. It will focus on how the committee worked together to organize educational events and will include tips for grading the educational activities to meet the needs of students in occupational therapy, pharmacy, nursing, health information management, and community health programs. Most importantly, it will facilitate a discussion about how IPE events can follow current trends in healthcare to to prepare occupational therapy students for fieldwork as well as increase their confidence in interprofessional collaboration of client care.

#### 10:30am - 11:30am

**Moderator:** Rita Moore MS, OTR/L

**Content Area(s):** Developmental Disabilities

**Title:** Developmental Disability Special Interest Section Round Table

**Audience:** Student, Entry Level, Intermediate, Advanced

**Description:** This session will be an open discussion format regarding developmental disabilities.

### Reminder: On-line Ethics Education will be Available Through ILOTA

Meets IDFPFR continuing education requirements for licensure renewal  
Free for ILOTA Members

#### Objectives

- Understand the potential sanctions that can result from a violation of ethics
- Apply process to evaluation of ethical situations
- Define OT Core Values and Attitudes
- Participants will be able to define ethics

#### Details

- One contact hour earned by viewing a pre-recorded PowerPoint with narration and completing the assessment

#### On-line Registration Required

Course information can be found here <http://www.ilota.org/ethics-ce-webinar>

## Special Interest Section Sessions

Special Interest Section discussion sessions will be held in a designated area of the grand ballroom. Come join your colleagues and discuss current topics related to the special interest sections listed below.

### Friday, October 4th—Continued

#### 3:00pm - 4:00pm

**Moderator:** Monika Robinson DrOT, OTR/L

**Content Area(s):** Community Practice, General

**Title:** Harnessing Innovative Occupational Therapy Practices in Home & Community-based Settings

**Audience:** Intermediate

**Description:** This round table discussion will focus on practice ideas that are non-traditional, innovative and emerging within home & community-based setting. Topic areas will include: telehealth, primary care home-based services, roles of OT in the community under CMS alternative payment models, and other trends impacting future OT practice and service delivery models. Facilitating group members to share questions and ideas among each other will also be a focus for this round table discussion.

#### 4:15pm - 5:15pm

**Moderator:** Clem Carder COTA/L, LMT, CKTI

**Content Area:** General

**Title:** OTAs as Entrepreneurs

**Audience:** Student, Entry Level, Intermediate, Advanced

**Description:** This session will be an open discussion format regarding entrepreneurship as an OTA.

### Saturday, October 5th

#### 9:30am - 10:30am

**Moderator:** Debora Davidson PhD, OTR/L

**Content Area:** Mental Health, Community Practice

**Title:** : OT in Mental Health Special Interest Section Round Table

**Audience:** Entry Level, Intermediate

**Description:** The Mental Health SIS Roundtable Discussion offers an opportunity for seasoned MHOT practitioners and not-so-seasoned OT and OTA practitioners to meet and discuss ways of providing quality OT services targeting the specific needs of clients with mental illness or significant emotional /behavioral/social difficulties.

#### 9:30am - 10:30am

**Moderator:** Rhonda Guzman MA, OTR/L

**Content Area:** Gerontology

**Title:** : Gerontology Special Interest Section Round Table

**Audience:** Student, Entry Level, Intermediate, Advanced

**Description:** This session will be an open discussion format regarding Gerontology.

#### 1:45pm - 2:45pm

**Moderator:** Jeanne Rehr COTA/L, Amanda Freeback BS, COTA/L

**Content Area:** Schools, General

**Title:** The Role of OTAs in Schools

**Audience:** Student, Entry Level, Intermediate, Advanced

**Description:** This session will explore multiple ways the OTA role can be used successfully within school systems.

#### 1:45pm—2:45pm

**Moderator:** Maureen Mulhall

**Content Area(s):** Advocacy

**Title:** Advocacy with Maureen Mulhall

**Audience:** Entry Level, Intermediate, Advanced

**Description:** Advocacy with Maureen Mulhall

#### 2:45pm - 3:45pm

**Moderator:** Theresa Carlson Carroll OTD, OTR/L

**Content Area:** Schools, Pediatrics

**Title:** Preparing Students for Transition to Adulthood: The Role of OT from Early Intervention through High School

**Audience:** Intermediate, Advanced

**Description:** This roundtable session will discuss the ways that Occupational Therapy practitioners can prepare students of all ages for the transition from school to adulthood. OT practitioners can select occupation based goals, engage in critical conversations with parents and students, and facilitate self-determination and empowerment at all ages in order to support successful postsecondary transition. During this roundtable participants will discuss the importance of considering postsecondary transition at all age levels and brainstorm strategies for supporting postsecondary transition with all students.

## Registration Instructions:

Conference pre-registration is exclusively online at [www.ilota.org](http://www.ilota.org). You may pay by credit card or check. If paying by check, choose that option on the registration website and mail the check, made payable to ILOTA, to: ILOTA, PO Box 4520, Lisle, IL 60532. If you do not have internet access to register online, please call the ILOTA office at (708) 452-7640 to register by phone.

- Early registration and payment must be received by September 8, 2019.
- Regular registration and payment must be received by September 22, 2019.
- Online registration closes on October 3, 2019. Onsite registration is available during the conference.

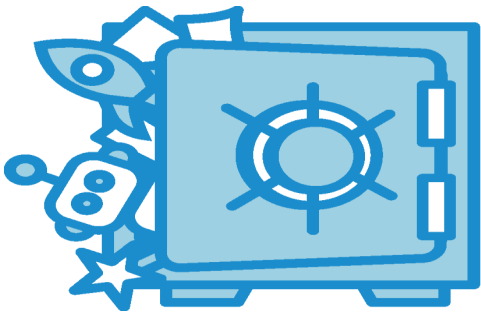
Contact the ILOTA office with questions/concerns at [office@ilota.org](mailto:office@ilota.org) or (708)452-7640.

<b>2019 Registration Fees</b>				
		<b>Early Registration</b> Through September 8	<b>Regular Registration</b> September 9 - September 22	<b>Late and On-Site Registration</b> After September 22
<b>2 Day Registration - Friday and Saturday</b>				
<b>Includes up to 16.5 contact hours of continuing education, Friday and Saturday breakfast and lunch</b>	ILOTA Member	\$399	\$424	\$474
	Non-Member	\$499	\$524	\$574
	Speaker Member	\$289	\$314	\$364
	Speaker Non-Member	\$399	\$424	\$474
	Student Member*	\$224	\$249	\$299
	Student Non-Member*	\$249	\$274	\$324
<b>Friday Only Registration</b>				
<b>Friday Registration includes up to 9 contact hours of continuing education, breakfast, lunch and networking reception</b>	ILOTA Member	\$219	\$244	\$294
	Non-Member	\$319	\$344	\$394
	Speaker Member	\$169	\$194	\$244
	Speaker Non-Member	\$219	\$244	\$294
	Student Member	\$119	\$144	\$164
	Student Non-Member	\$149	\$174	\$194
<b>Saturday Only Registration</b>				
<b>Saturday Registration includes up to 7.5 contact hours of continuing education, breakfast and lunch</b>	ILOTA Member	\$219	\$244	\$294
	Non-Member	\$319	\$344	\$394
	Speaker Member	\$169	\$194	\$244
	Speaker Non-Member	\$219	\$244	\$294
	Student Member	\$119	\$144	\$164
	Student Non-Member	\$149	\$174	\$194

\*Please note that Student registration fees are only applicable to undergraduate or entry level occupational therapy practitioner students. Licensed practitioners who are currently post-professional students are not eligible to register as students.

Thank you to our 2019 Conference Platinum & Gold Vendors!

GOLD LEVEL



**Therapy  
materials  
vault** 



**APTIVA THERAPY**  
The Art and Science of Therapy

SILVER LEVEL



The **Stepping Stones**  
GROUP™  
*Special Education Solutions*



Supplemental  Health Care<sup>SM</sup>

WORRY LESS, CARE MORE

## **2019 Conference Committee**

**Thank you to our 2019 Conference Committee volunteers!**

**Conference Chair:**

Abigail Swidergal

**Conference Committee:**

Janet Adcox  
Sarah Austin  
Amanda Baudin  
Veronica Ford  
Jake Garrison  
Lisa Mahaffey  
Bev Menninger  
La'Taria Overstreet  
Marie-Claude Touchette

**Proposal Reviewers:**

Janet Adcox  
Belinda D. Anderson  
Molly Bathje  
Emily Benner  
Eron Bozec  
Kimberly Bryze  
Paula Costello  
Debora Davidson  
Phyllis Hughes  
Celeste Januszewski  
Lisa Mahaffey  
Colleen McDonald  
Susan McKay

Christine Morrison  
Pooja Patel  
Jennifer Richert  
Nancy Richman  
Anjali P. Sane  
Susan Spoeri  
Ashley Stoffel  
Marie-Claude Touchette  
Rachel M. Vaughn  
Marit Watson  
June A. Weckler  
Sarah Zera

**Student Event Commitee:**

Erin Bradley OTS (Midwestern University)  
Morgan Stasell OTS (Rush University)



### **Cancellation Policy:**

Refunds will be issued, minus a \$50.00 processing fee, if notification is received by October 3, 2019. Refunds will not be granted for cancellations that are received the day of conference.

### **Accessibility and Reasonable Accommodations:**

ILOTA is committed to ensuring that the conference is accessible to everyone. During registration, we invite you to list your meeting accommodation requests, accessibility needs, and any equipment used we should be aware of in order to make your experience more comfortable. In addition, we also ask about special dietary accommodation requests and other questions of this nature to help us prepare for the conference. The deadline for accommodation requests is September 20, 2019.

### **No Fragrance and Smoke Free Policy:**

Due to chemical sensitivities, we request that speakers and participants refrain from using personal products that are heavily fragranced and from the use of **any** perfume or colognes while attending the ILOTA Conference. The entire conference area at the Tinley Park Convention Center is also designated as smoke-free.